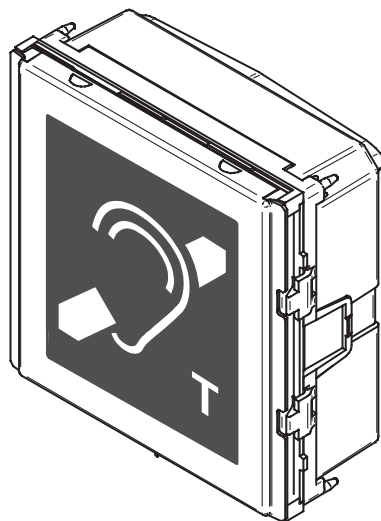


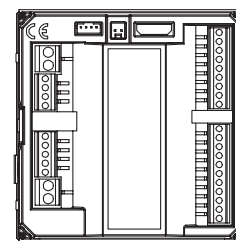
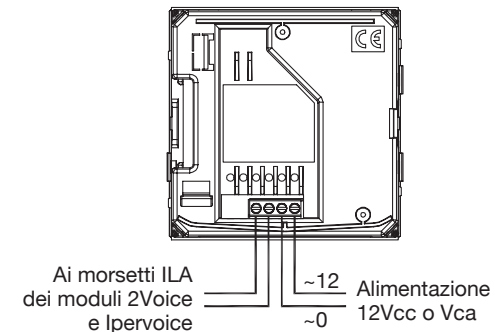
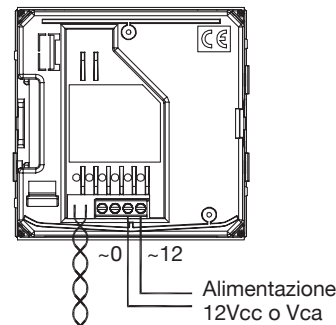
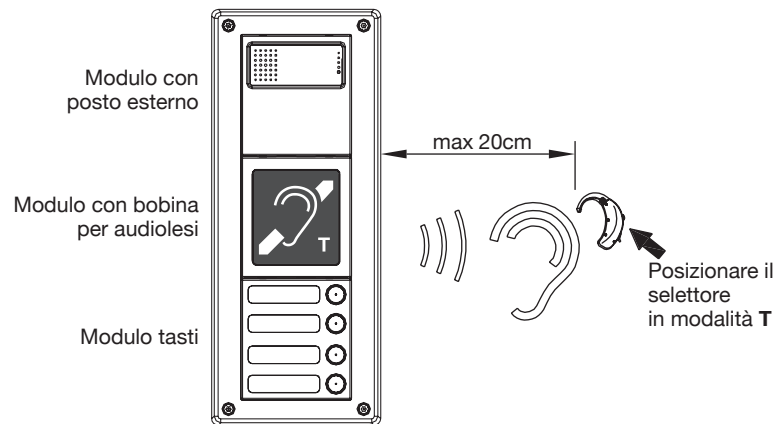
MODULO CON BOBINA PER AUDIOLESI
HEARING IMPAIRED PEOPLE MODULE
MODULE AVEC BOBINE POUR MALENTENDANTS
MÓDULO CON BOBINA PARA PERSONAS CON PROBLEMA DE
OÍDO
MODUL MIT SPULE FÜR HÖRBEHINDERTE

Sch./Ref. 1158/48



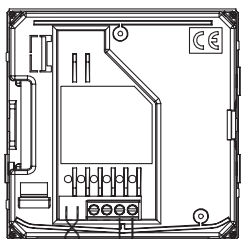
ITALIANO

Il modulo con bobina ILA (Induction Loop Antenna) Sch.1158/48 è un modulo che permette agli utenti con problemi di udito di ascoltare la conversazione audio sul posto esterno tramite il proprio apparecchio acustico. L'apparecchio acustico deve essere dotato di interfaccia magnetica di tipo "T".

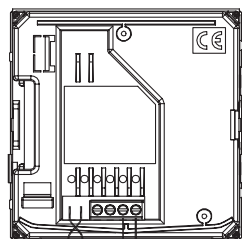


Posto esterno
Sch.1072/8

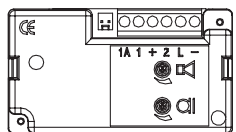
INSTALLAZIONE



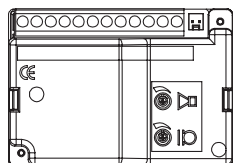
Alimentazione
12Vcc o Vca



Alimentazione
12Vcc o Vca



Posto esterno
Sch.1145/500



Posto esterno
Sch.1145/67

DESCRIZIONE DEI MORSETTI

ILA coppia di morsetti da collegare ai morsetti ILA delle postazioni di chiamata digitali

~12 alimentazione 12Vca o 12Vcc

~0 massa alimentazione

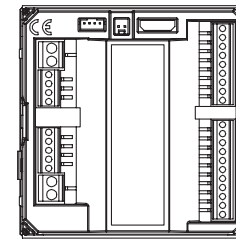
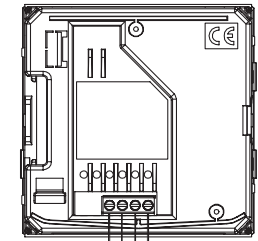
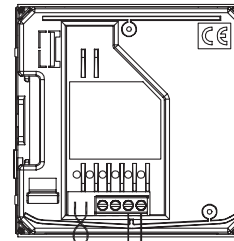
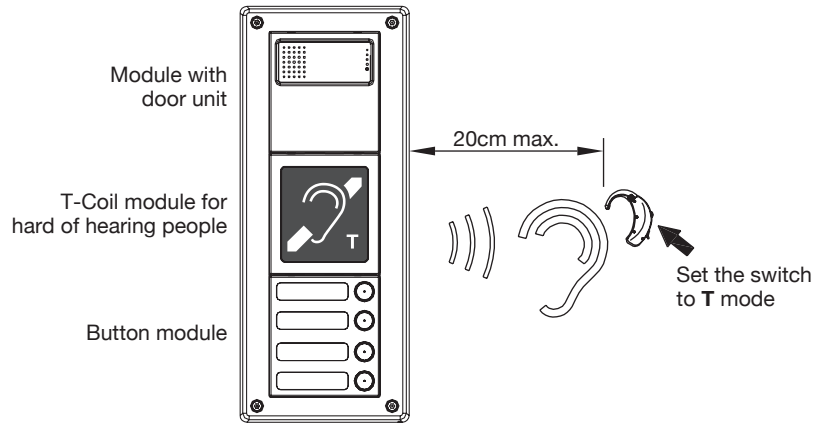
Prevedere un dispositivo di alimentazione dedicato per il modulo Sch.1158/48.

CARATTERISTICHE TECNICHE

Tensione di alimentazione	12V ca o cc
Assorbimento max	100mA @12Vcc 200mA @12Vca
Temperatura di funzionamento	-5 ÷ +45°C

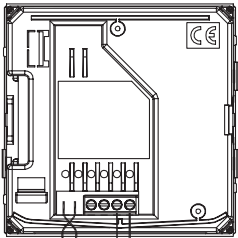
ENGLISH

ILA (Induction Loop Antenna) T-coil module Ref. 1158/48 allows hard of hearing to hear door unit audio conversations with the hearing aid. The hearing aid must be equipped with a T-magnetic interface.

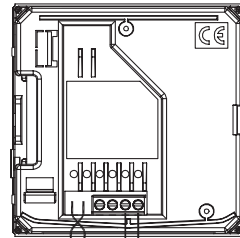


Ref. 1072/8 door unit

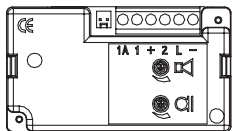
INSTALLATION



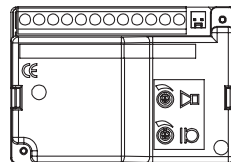
12Vdc or Vac power supply



12Vdc or Vac power supply



Ref. 1145/500 door unit



Ref. 1145/67 door unit

TERMINAL PINS DESCRIPTION

- ILA** ILA two terminal pins to be connected to ILA terminal
- ~12** 12Vac or 12Vdc power supply
- ~0** power supply ground

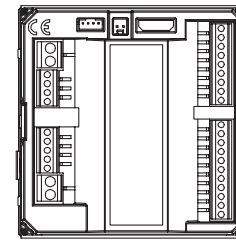
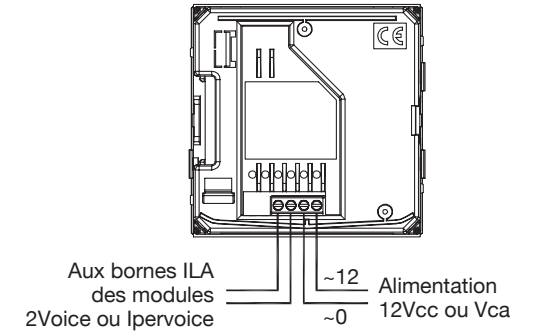
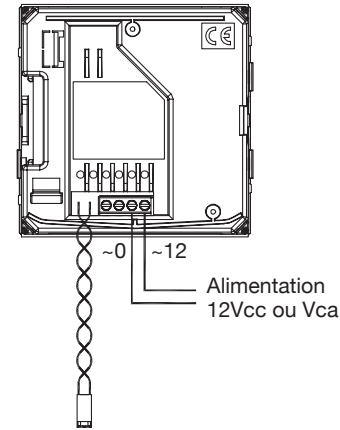
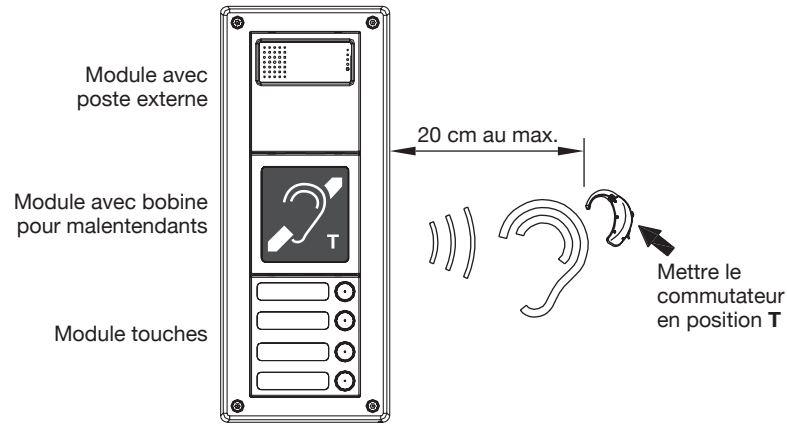
A power supply device dedicated to Ref. 1158/48 module is needed.

TECHNICAL CHARACTERISTICS

Power supply voltage	12V ac or dc
Max. current consumption	100mA @12Vcc
	200mA @12Vca
Operating temperature range.....	-5 ÷ +45°C

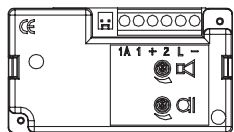
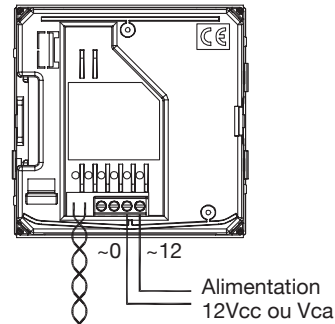
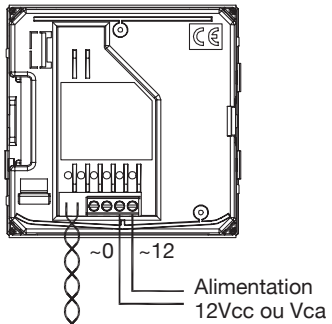
FRANÇAIS

Le module avec bobine ILA (Induction Loop Antenna) Réf.1158/48 est un module qui permet aux malentendants d'écouter une conversation sonore sur le poste externe avec leur appareil auditif. Cet appareil auditif doit être muni d'une interface magnétique de type « T ».

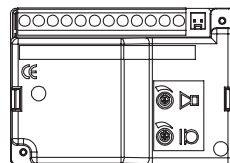


Poste externe
Réf. 1072/8

INSTALLATION



Poste externe
Réf. 1145/500



Poste externe
Réf. 1145/67

DESCRIPTION DES BORNES

ILA ILA couple de bornes à raccorder aux bornes ILA des postes d'appel numériques

~12 alimentation 12Vca or 12Vcc

~0 masse alimentation

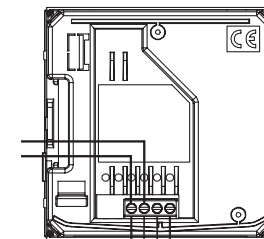
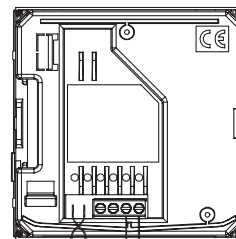
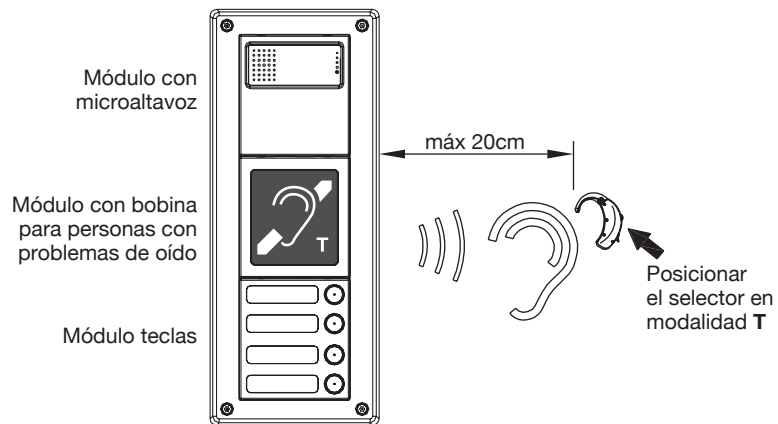
Prévoir un dispositif d'alimentation dédié pour le module Réf. 1158/48.

CARACTÉRISTIQUES TECHNIQUES

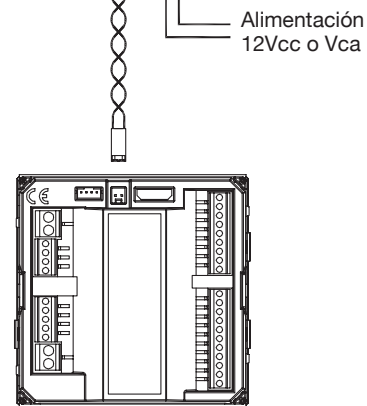
Tension d'alimentation	12V ca o cc
Consommation de courant max.....	100mA @12Vcc 200mA @12Vca
Température de fonctionnement.....	-5 ÷ +45°C

ESPAÑOL

El módulo con bobina ILA (Induction Loop Antena) Sch.1158/48 es un módulo que permite a los usuarios con problemas de oído de escuchar la conversación audio en el microaltavoz por medio de su propio aparato acústico. El aparato acústico tiene que tener un interfaz magnético de tipo "T".

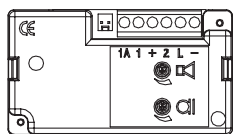
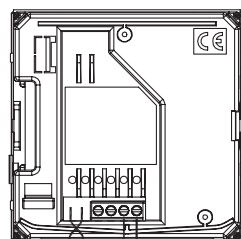
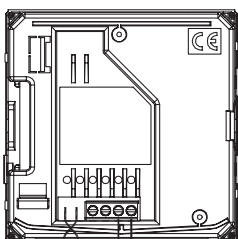


Hacia los bornes ILA de los módulos 2voice o 1pvoice

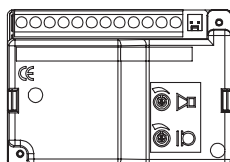


Microaltavoz Sch.1072/8

INSTALACIÓN



Microaltavoz Sch.1145/500



Microaltavoz Sch.1145/67

DESCRIPCIÓN DE LOS BORNES

- ILA** ILA par de bornes que se conectan a los bornes ILA de las posiciones de llamadas digitales
- ~12** alimentación 12Vca o 12Vcc
- ~0** masa alimentación

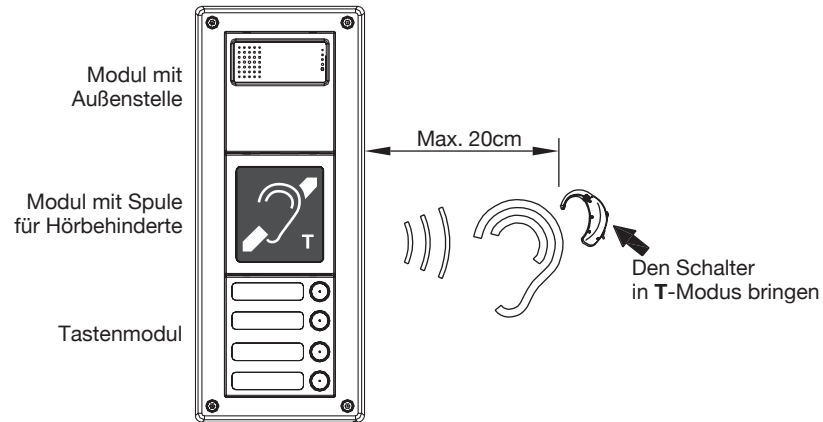
 Prever un dispositivo de alimentación dedicado para el módulo Sch.1158/48.

CARACTERÍSTICAS TÉCNICAS

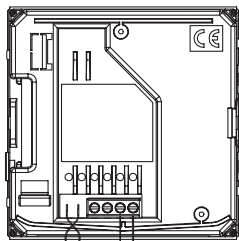
Tensión de alimentación	12V ca o cc
Absorción máx	100mA @12Vcc 200mA @12Vca
Temperatura de funcionamiento	-5 ÷ +45°C

DEUTSCH

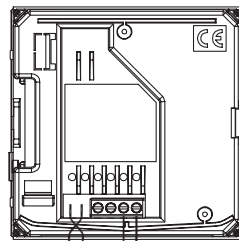
Das Modul mit ILA (Induction Loop Antenna) T-Spule Karte 1158/48 ermöglicht den Teilnehmern mit Hörproblemen das Gespräch auf der Außenstelle über das eigene Hörgerät zu hören. Das Hörgerät muss über eine magnetische T-Schnittstelle verfügen.



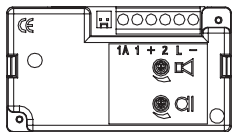
INSTALLATION



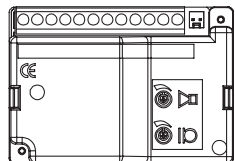
Stromversorgung
12V DC oder V CA



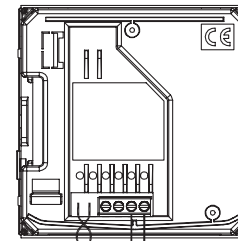
Stromversorgung
12V DC oder V CA



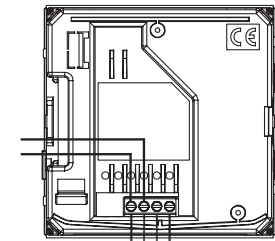
Außenstelle
Karte 1145/500



Außenstelle
Karte 1145/67

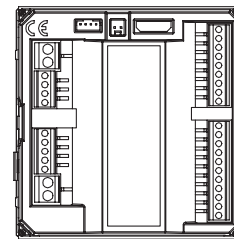


Stromversorgung
12V DC oder V CA



Zu den ILA-Klemmen
der Module 2voice
oder Ipvoice

Stromversorgung
12V DC oder V CA



Außenstelle
Karte 1072/8

BESCHREIBUNG DER KLEMMEN

ILA ILA-Klemmenpaar zum Anschluss an ILA-Klemmen der Digitalruf-Stellen

~12 Stromversorgung 12VDC oder 12V AC

~0 Versorgungsmasse

Eine Vorrichtung zur Stromversorgung speziell für das Modul Karte 1158/48 vorsehen.

TECHNISCHE EIGENSCHAFTEN

Versorgungsspannung	12V DC oder V CA
Max. Stromaufnahme	100mA @12V DC 200mA @12V CA
Betriebstemperatur	-5 ÷ +45°C

DS 1158-007A

URMET S.p.A.
10154 TORINO (ITALY)
VIA BOLOGNA 188/C
Telef. +39 011.24.00.000 (RIC. AUT.)
Fax +39 011.24.00.300 - 323

urmet

LBT 8596

Area tecnica
servizio clienti +39 011.23.39.810
<http://www.urmet.com>
e-mail: info@urmet.com