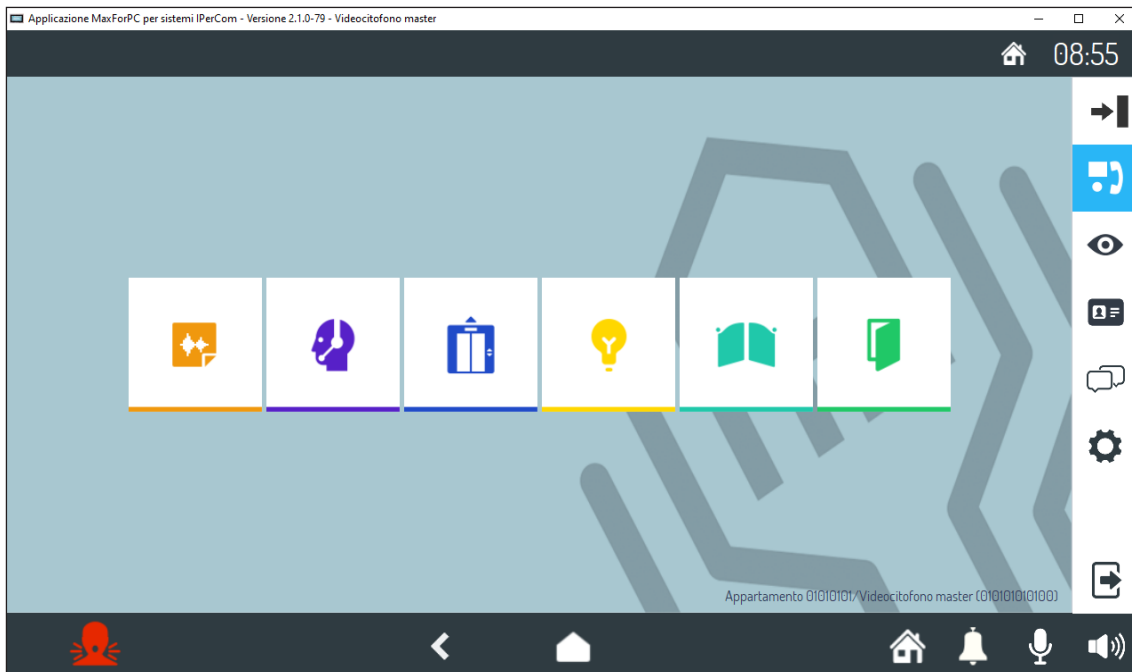
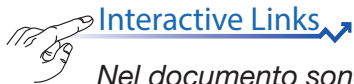


**SOFTWARE PER VIDEOCITOFONO IP PER PC WINDOWS  
*IPERCOM CLIENT SOFTWARE FOR WINDOWS PC*  
INTERASCOTFITWARE VOOR IP VIDEOINTERCOM VOOR WINDOWS PC**

**Sch./Ref.1060/43**



**LIBRETTO DI INSTALLAZIONE  
*INSTALLATION MANUAL*  
INSTALLATIEHANDLEIDING**



[Interactive Links](#)

Nel documento sono presenti [LINK INTERATTIVI](#) per rendere la consultazione più rapida ed efficiente.

## INDICE

---

|                   |   |    |
|-------------------|---|----|
| <a href="#">1</a> | <a href="#">DESCRIZIONE GENERALE</a>          | 3  |
| <a href="#">2</a> | <a href="#">REQUISITI HARDWARE E SOFTWARE</a> | 3  |
| <a href="#">3</a> | <a href="#">INSTALLAZIONE</a>                 | 3  |
| <a href="#">4</a> | <a href="#">AVVIO DELL'APPLICAZIONE</a>       | 5  |
| <a href="#">5</a> | <a href="#">CONFIGURAZIONE</a>                | 7  |
|                   | <a href="#">ENGLISH</a>                       | 8  |
|                   | <a href="#">NEDERLANDS</a>                    | 14 |

# 1 DESCRIZIONE GENERALE

Il seguente libretto descrive le fasi di installazione dell'applicazione Sch. 1060/43. L'applicazione permette l'utilizzo del proprio PC con sistema operativo Windows come un videocitofono IP Ipercom.

**ATTENZIONE!** Per il funzionamento dell'applicazione **Ipercom Client Sch. 1060/43** è necessario che la versione del firmware del sistema Ipercom sia la **2.1.0 o superiore**. L'aggiornamento della versione del firmware del sistema Ipercom è disponibile sul sito Urmet alla sezione *Download/Software* oppure premendo il link riportato di seguito (previa registrazione).

<http://qrcode.urmet.com/default.aspx?sito=urmet&arg=software&sezione=IPERCOM&lingua=it>

# 2 REQUISITI HARDWARE E SOFTWARE

I requisiti minimi hardware e software del PC sono i seguenti:

- **Processore:** 32 bit (x86) o a 64 bit (x64) da 2GHz o superiore (Windows 7, 8, 10 Home Premium, Professional o Ultimate e 11 Home o Pro);
- **RAM:** 2 GB (32-bit o 64-bit);
- **Spazio su disco:** 16 GB (32 bit) o 20 GB (64 bit) a disposizione;
- **Scheda audio:** compatibile con Microsoft Windows 7, 8, 10 a 32 bit o 64 bit (Home Premium, Professional o Ultimate) o 11 a 64 bit (Home o Pro);
- **Scheda video:** compatibile con Microsoft Windows 7, 8, 10 a 32 bit o 64 bit (Home Premium, Professional o Ultimate) o 11 a 64 bit (Home o Pro); risoluzione minima 1024 x 768 pixel;
- **Webcam (\*):** compatibile con Microsoft Windows 7, 8, 10 a 32 bit o 64 bit (Home Premium, Professional o Ultimate) o 11 a 64 bit (Home o Pro);
- **Porta USB:** 1 per il collegamento della chiavetta  
1 per il collegamento del citofono esterno 1060/41 (opzionale)
- **Interfaccia Ethernet:** 10/100 Mbps.

# 3 INSTALLAZIONE

Collegare il PC su cui si desidera utilizzare l'applicazione a uno switch presente all'interno dell'impianto Ipercom. Successivamente collegare la chiavetta USB ad una porta del PC.

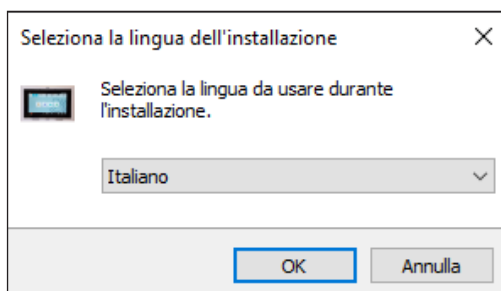
**ATTENZIONE!** Ai soli fini installativi è necessario che l'impianto Ipercom sia connesso a Internet per effettuare l'associazione tra la chiavetta e il sistema Ipercom.

Durante le fasi di installazione **NON RIMUOVERE** la chiavetta USB dal PC e seguire le indicazioni che vengono presentate di volta in volta nelle varie finestre di interfaccia.

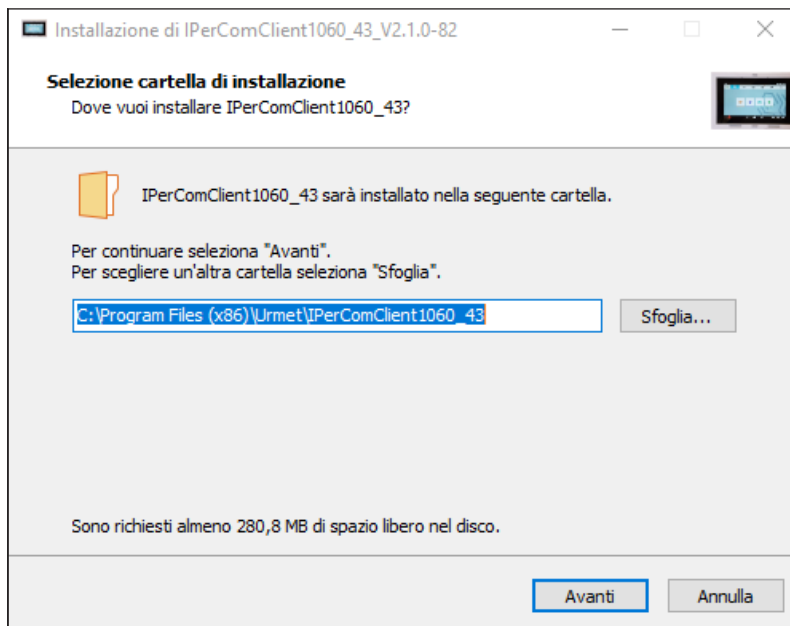
Per eseguire correttamente la procedura di installazione dell'applicazione è necessario accedere al PC con privilegi di amministratore di sistema. In caso contrario non sarà possibile eseguire correttamente l'installazione.

La procedura di installazione dell'applicazione si avvia eseguendo il relativo file di installazione "**IPerComClient1060\_43\_X.X.X-XX\_YY.YY\_Setup.exe**" presente all'interno della chiavetta USB.

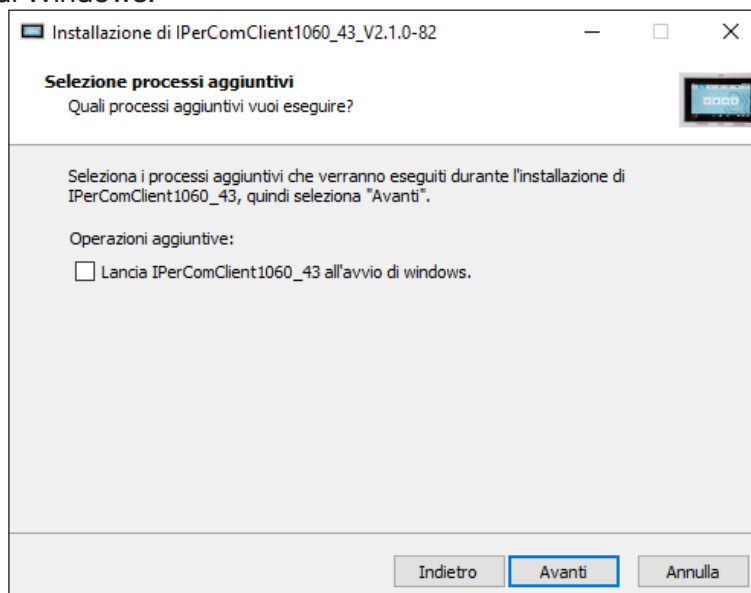
Dopo aver avviato il file di installazione compare una finestra in cui è necessario selezionare la lingua di installazione dell'applicazione.



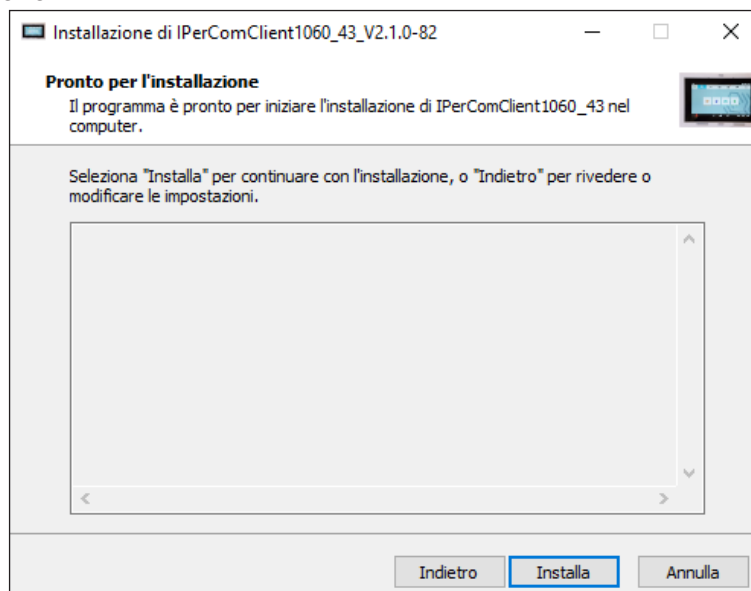
Dopo aver scelto la lingua di installazione compare una nuova finestra con evidenziata la cartella dove l'applicazione viene installata (è possibile cambiare la cartella tramite il pulsante **“Sfoggia”**):



Premendo il pulsante **“Avanti”** compare la schermata riportata di seguito, dove è possibile spuntare la casella **“Lancia IpercomClient1060\_43 all'avvio di windows”** per permettere l'attivazione automaticamente dell'applicazione all'avvio di Windows.



Premendo il pulsante **“Avanti”** compare la seguente schermata dove è possibile avviare il processo di installazione premendo il pulsante **“Installa”**.



A completamento dell'installazione l'applicazione visualizzerà la seguente schermata:

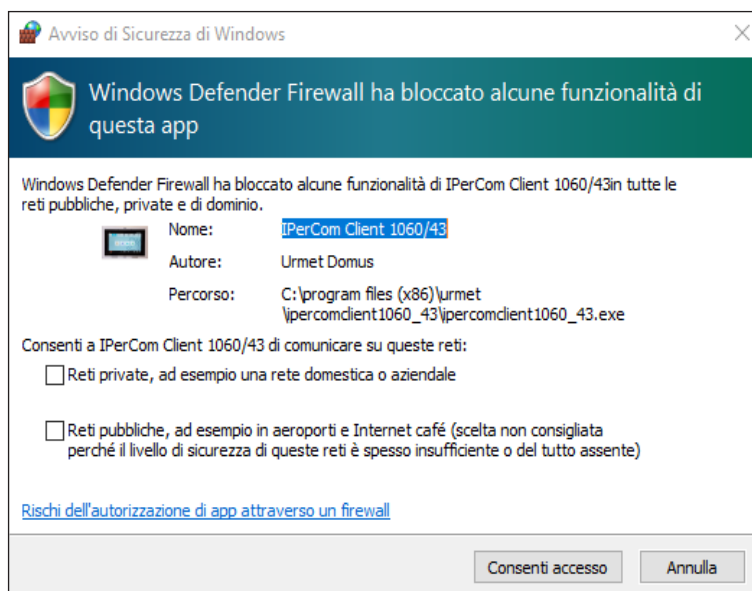


 Spuntando sulla casella **“Avvia IPerComClient 1060\_43”** è possibile avviare l'applicazione subito dopo aver chiuso la schermata di installazione.

Premere il pulsante **“Fine”** per terminare la fase di installazione.

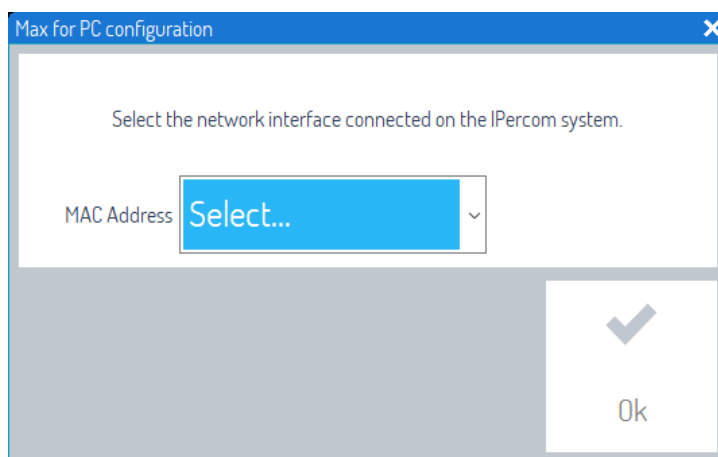
## 4. AVVIO DELL'APPLICAZIONE

Durante la prima esecuzione è possibile che il sistema operativo Windows notifichi la necessità di consentire l'accesso alle porte della rete IP da utilizzare per la comunicazione tra il sistema Ipercom e l'applicazione “IPerComClient”. Questa operazione è necessaria per il corretto funzionamento dell'applicazione. Se lo sblocco delle porte sulla rete IP è gestito dal modulo Windows Firewall, verrà mostrata la seguente schermata:




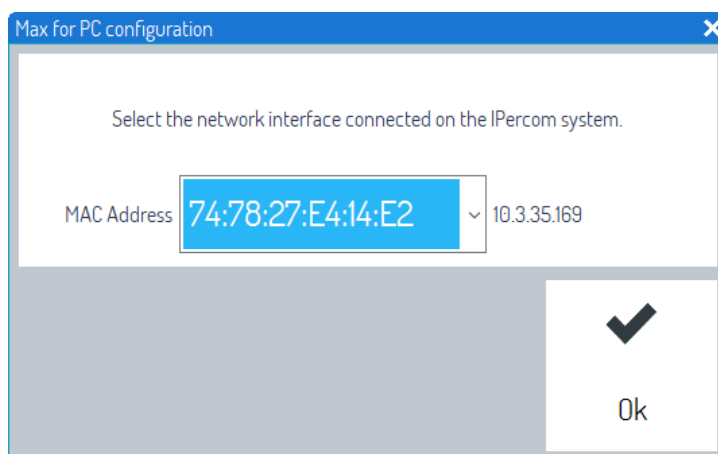
Spuntare le caselle di accesso delle reti e premere il tasto **“Consenti accesso”**.

Al primo avvio è necessario selezionare l'indirizzo Mac dell'interfaccia di rete collegata al sistema Ipercom, per permettere l'associazione tra l'applicazione e il sistema.

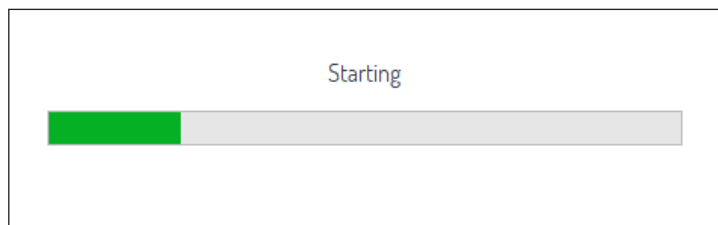


Nel campo “**MAC Address**” selezionare dal menu a tendina l'indirizzo MAC corretto della rete Ipercom.

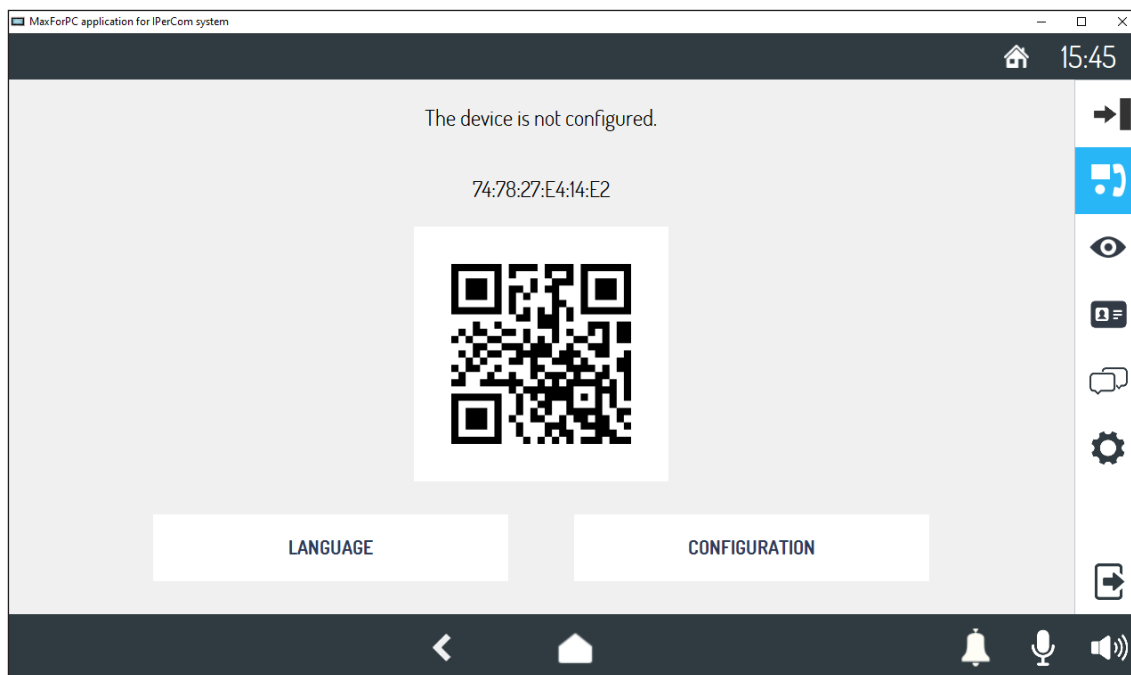
 È possibile risalire all'indirizzo MAC attraverso il PC collegato alla rete Ipercom. Aprire il pannello di controllo del PC e selezionare la voce “**Rete e Internet**”, selezionare la voce “**Centro connessioni di rete e condivisione**” e infine selezionare la voce “**Modifica impostazioni scheda**”. Identificare la rete del sistema Ipercom, premere con il tasto destro del mouse e selezionare la voce “**Stato**”, successivamente premere sul pulsante “**Dettagli...**”. Si aprirà una schermata con le proprietà di connessione della rete. Nel campo “**Indirizzo fisico**” è riportato l'indirizzo MAC dell'interfaccia di rete collegata alla rete Ipercom.



Dopo aver selezionato l'indirizzo MAC corretto premere sul pulsante “**OK**”.



Alla fine del processo di associazione viene visualizzata la seguente schermata:



L'applicazione IPerComClient Sch.1060/43 è stata associata correttamente al sistema Ipercom ed è in attesa di ricevere la configurazione.

**Per poter utilizzare l'applicazione è sempre necessario:**

- collegare il PC all'impianto Ipercom,
- collegare la chiavetta USB al PC.

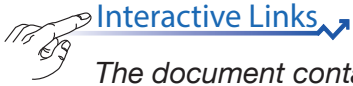
**ATTENZIONE!** Non cancellare il file esecutivo "IPerComClient1060\_43\_X.X.X-XX\_YY.YY\_Setup.exe" all'interno della chiavetta USB.

## 5. CONFIGURAZIONE

Per la configurazione dell'applicazione Sch. 1060/43 consultare il manuale tecnico di sistema Ipercom scaricandolo dal sito Urmet alla sezione *Download/Manuali tecnici/Comunicazione/Sistema Ipercom* premendo il link riportato di seguito.

<http://qrcode.urmet.com/default.aspx?arg=manuali&sezione=Ipercom&lingua=it>

**ATTENZIONE!** Nel caso di configurazione con l'applicativo Ipercom Installer Tools, si consiglia di utilizzare un PC diverso da quello in cui è stato installato il software Sch.1060/43.



[Interactive Links](#)

The document contains [INTERACTIVE LINKS](#) for faster and more efficient consultation.

## INDEX

---

|                   |  |    |
|-------------------|--|----|
| <a href="#">1</a> | <a href="#">GENERAL DESCRIPTION</a>                | 9  |
| <a href="#">2</a> | <a href="#">HARDWARE AND SOFTWARE REQUIREMENTS</a> | 9  |
| <a href="#">3</a> | <a href="#">INSTALLATION</a>                       | 9  |
| <a href="#">4</a> | <a href="#">STARTING THE APPLICATION</a>           | 11 |
| <a href="#">5</a> | <a href="#">CONFIGURATION</a>                      | 13 |



# 1 GENERAL DESCRIPTION

---

The following booklet describes the installation steps of the application Ref. 1060/43. The application allows you to use your PC with Windows Operating System as an Ipercom IP system.

**ATTENTION!** To use the **Ipercom Client application Ref. 1060/43**, the firmware version of the Ipercom system must be **2.1.0 or higher**. The firmware version of the Ipercom system can be updated by accessing the Download/Software section available on the Urmet website or by pressing the link below (after registration).

<http://qrcode.urmet.com/default.aspx?sito=urmet&arg=software&sezione=IPERCOM&lingua=en>

# 2 HARDWARE AND SOFTWARE REQUIREMENTS

---

The minimum hardware and software requirements of the PC are as follows:

- **Processor:** 32-bit (x86) or 64-bit (x64) 2GHz or higher (Windows 7, 8, 10 Home Premium, Professional or Ultimate or 11 Home, Pro);
- **RAM:** 2 GB (32-bit or 64-bit);
- **Disk space:** 16 GB (32 bit) or 20 GB (64 bit) available;
- **Sound card:** compatible with Microsoft Windows 7, 8, 10 32-bit or 64-bit (Home Premium, Professional or Ultimate) and 11 64-bit (Home or Pro);
- **Video card:** compatible with Microsoft Windows 7, 8, 10 32-bit or 64-bit (Home Premium, Professional or Ultimate) and 11 64-bit (Home or Pro) resolution at least 1024 x 768 pixels;
- **Webcam (\*):** compatible with Microsoft Windows 7, 8, 10 32-bit or 64-bit (Home Premium, Professional or Ultimate) and 11 64-bit (Home or Pro);
- **USB port:** 1 for connecting the key  
1 for connection of door station 1060/41 (optional)
- **Ethernet interface:** 10/100 Mbps.

# 3 INSTALLATION

---

Connect the PC on which you want to use the application to a switch inside the Ipercom system. Then connect the USB flash drive to a PC port.

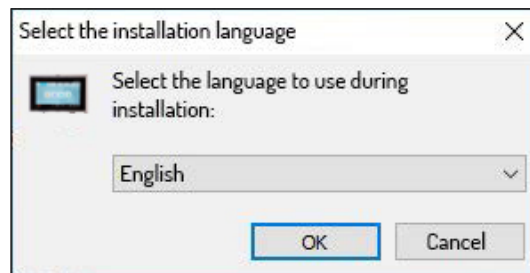
**ATTENTION!** For installation purposes only, it is necessary that the Ipercom system is connected to the Internet, in order to make the association between the flash drive and the Ipercom system.

During the installation phases, **DO NOT REMOVE** the USB flash drive from the PC and follow the instructions that are shown from time to time in the various interface windows.

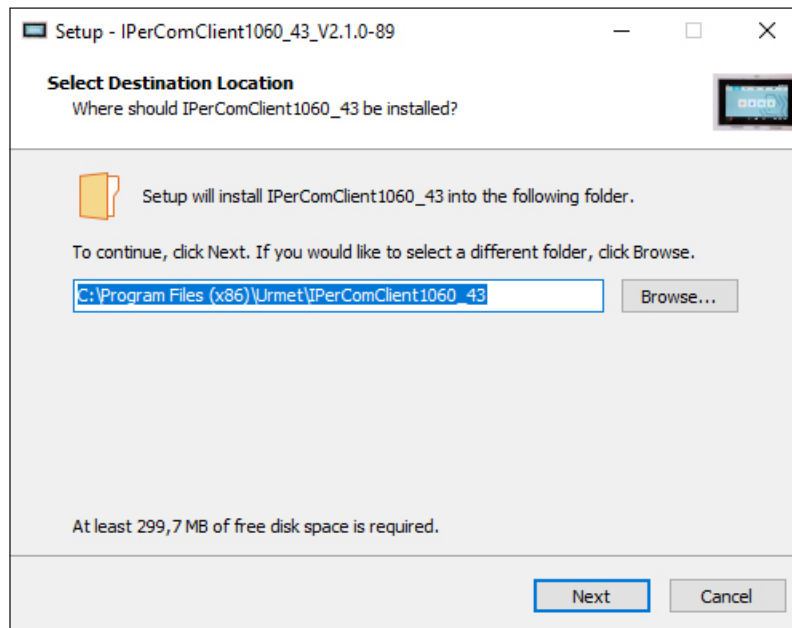
In order to perform the application installation procedure correctly, it is necessary to log on to the PC as a system administrator. Otherwise the installation cannot be performed correctly.

Start the application installation procedure by running the relevant installation file "**IPerComClient1060\_43\_X.X.X-XX\_YY.YY\_Setup.exe**" located in the USB flash drive.

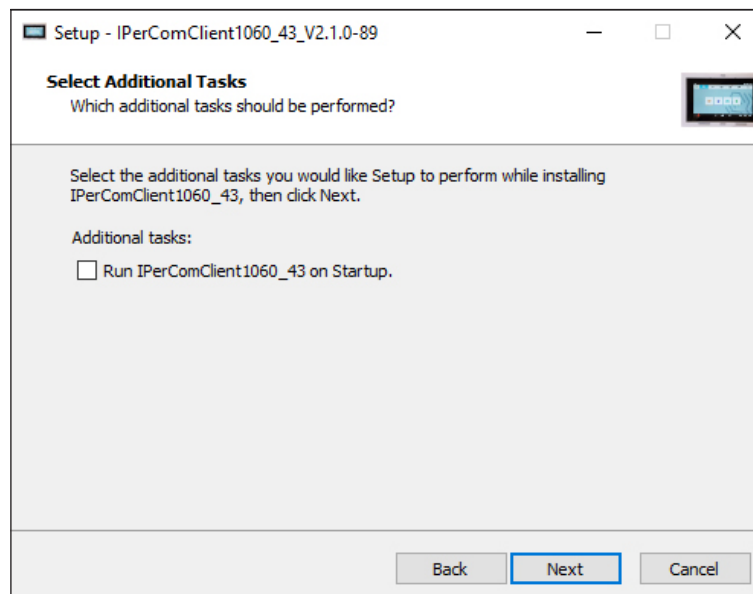
After launching the installation file, a window appears in which you must select the application installation language.



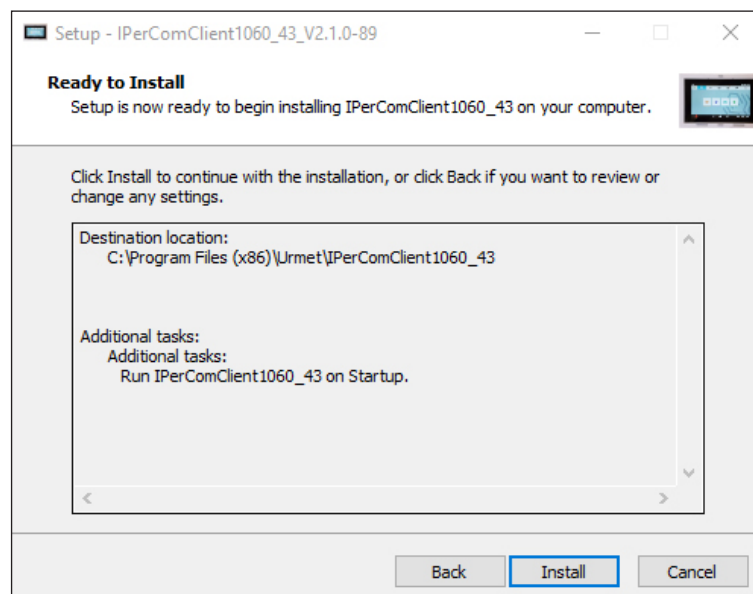
After choosing the installation language, a new window appears highlighting the folder where the app is installed (you can change the folder using the **“Browse”** button):



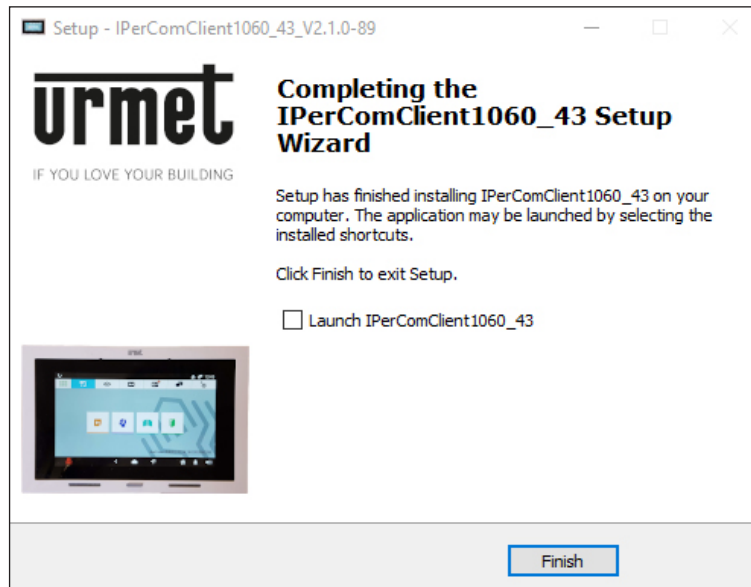
Pressing the **“Next”** button will show the following screen, where you can check the box **“Launch IpercomClient1060\_43 at Windows startup”** to allow the automatic activation of the application at Windows startup.




Press the **“Next”** button to open the following screen where you can start the installation process by pressing the **“Install”** button.



The app will display the following screen when the installation is complete:

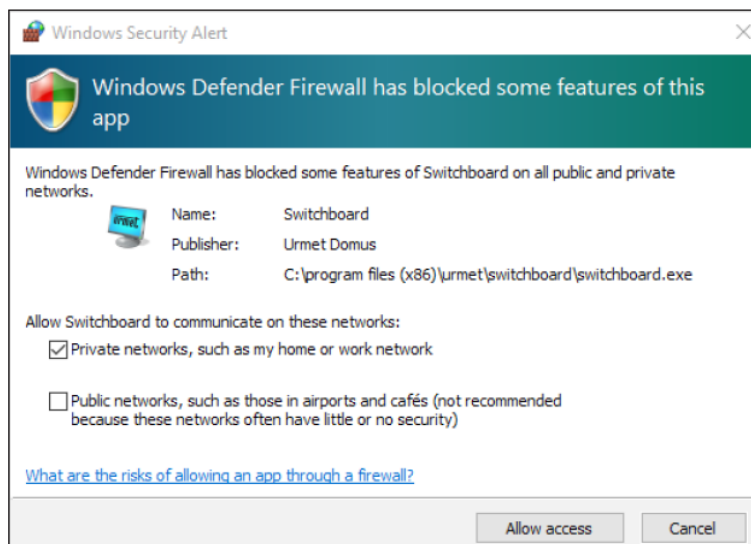


 Check the box **“Launch IPerComClient 1060\_43”** to start the application immediately after closing the installation screen.

Press the **“Finish”** button to end the installation phase.

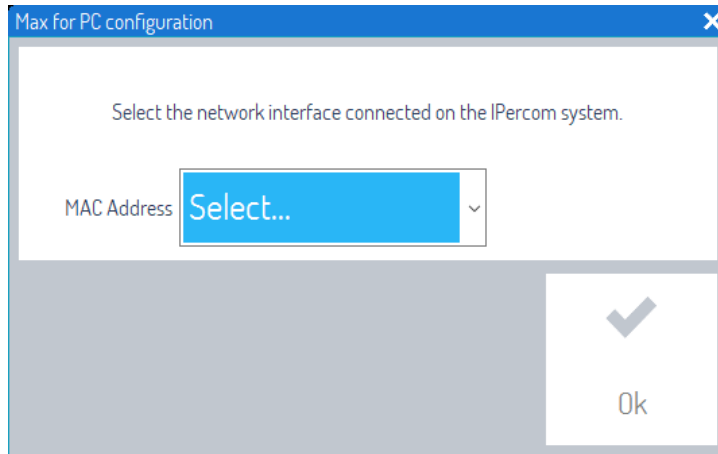
## 4. STARTING THE APPLICATION

During the first run, the Windows Operating System may notify the need to allow access to the IP network ports to be used for communication between the Ipercom system and the “IPerComClient” application. This operation is required for proper application operation. If the port unlock on the IP network is managed by Windows Firewall module, the following screen will be shown:




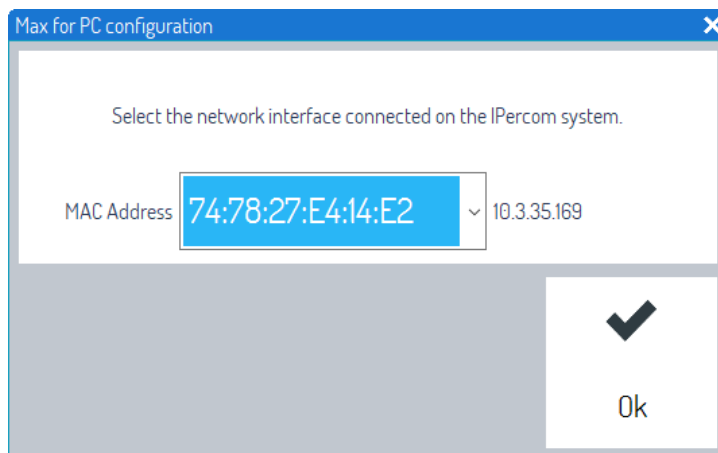
Check the network access boxes and press **“Allow access”**.

At first start-up, the Mac address of the network interface connected to the Ipercom system must be selected to allow association between the application and the system.

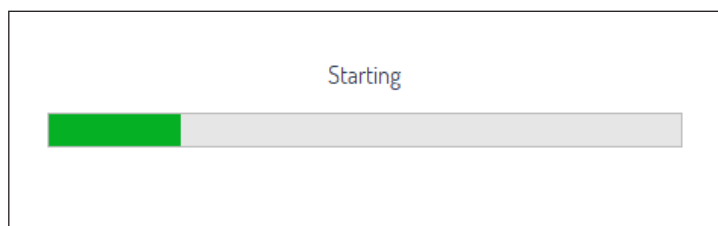


Select the correct MAC address of the Ipercom network from the drop-down menu in the “**MAC Address**” field.

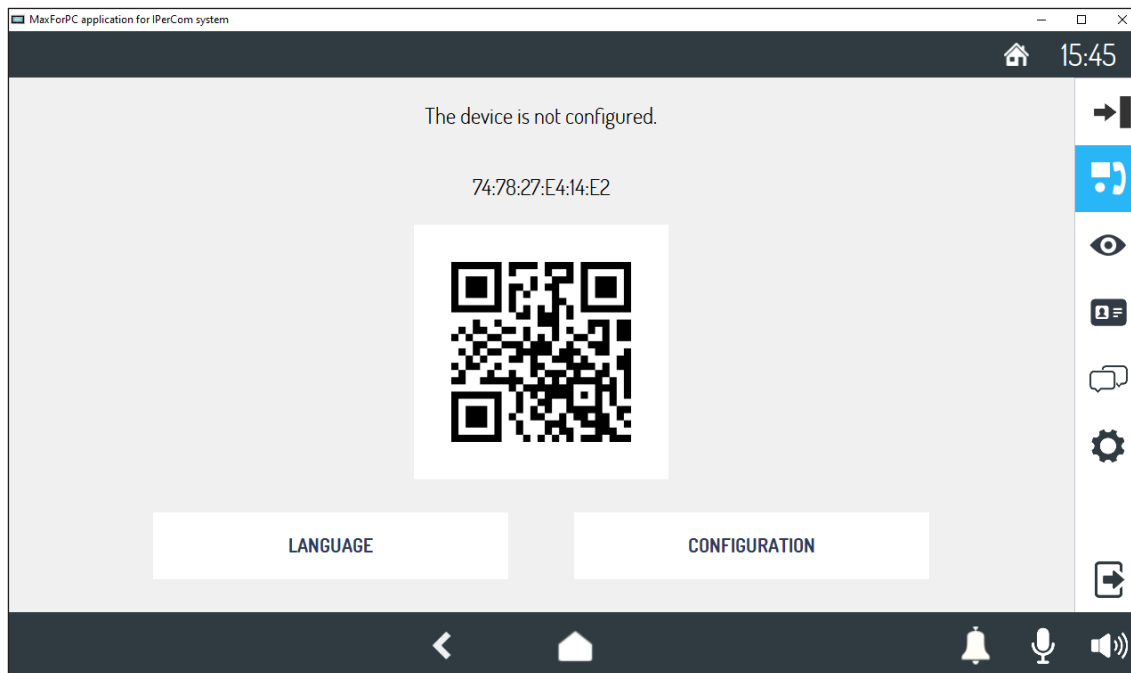
 The MAC address can be found through the PC connected to the Ipercom network. Open the PC control panel and select “**Network & Internet**”, then “**Network and Sharing centre**” and finally select “**Change adapter settings**”. Identify the network of the Ipercom system, right-click on it and select “**Status**”, then press “**Details...**”. A screen will open with the properties of the network connection. The “**Physical address**” field shows the MAC address of the network interface connected to the Ipercom network.



After selecting the correct MAC address, press “**OK**”.



At the end of the association process, the following screen is displayed:



The IPerComClient application Ref.1060/43 has been correctly associated with the Ipercom system and is waiting to be configured.

**To use the application, it is always necessary to:**

- connect the PC to the Ipercom system,
- connect the USB flash drive to the PC.

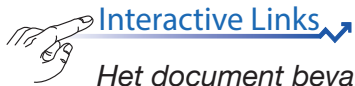
**ATTENTION!** Do not delete the executable file “IPerComClient1060\_43\_X.X.X-XX\_YY.YY\_Setup.exe” in the USB flash drive.

## 5. CONFIGURATION

To configure the application Ref. 1060/43, consult the technical manual of the Ipercom system by downloading it from the Urmet website, under the *Download/Technical Manuals/Communication/Ipercom System* section pressing the link below.

<http://qrcode.urmet.com/default.aspx?arg=manuali&sezione=Ipercom&lingua=en>

**ATTENTION!** In the case of configuration with Installer Tools Ipercom app, it is recommended to use a PC different from that on which the software Ref.1060/43 was installed.



[Interactive Links](#) ↗

Het document bevat [INTERACTIEVE LINKS](#) om raadpleging sneller en efficiënter te maken.

## INHOUDSOPGAVE

---

|  |    |
|--|----|
| <a href="#">1 ALGEMENE BESCHRIJVING</a> .....          | 15 |
| <a href="#">2 HARDWARE- EN SOFTWAREVEREISTEN</a> ..... | 15 |
| <a href="#">3 INSTALLATIE</a> .....                    | 15 |
| <a href="#">4 DE TOEPASSING STARTEN</a> .....          | 17 |
| <a href="#">5 CONFIGURATIE</a> .....                   | 19 |

# 1 ALGEMENE BESCHRIJVING

---

Het volgende boekje beschrijft de installatiefasen van de applicatie Sch. 1060/43. De applicatie staat het gebruik toe van uw eigen PC met Windows-besturingssysteem als een Ipercom IP-videodeurintercom.

**OPGELET!** Voor de werking van de **Ipercom Client Sch. 1060/43**, moet de firmwareversie van het Ipercom-systeem **2.1.0 of hoger zijn**. De update van de firmwareversie van het Ipercom-systeem is beschikbaar op de Urmet-website in het gedeelte Download/Software of door op de onderstaande link te klikken (na registratie).

<http://qrcode.urmet.com/default.aspx?sito=urmet&arg=software&sezione=IPERCOM&lingua=en>

## 2 HARDWARE- EN SOFTWAREVEREISTEN

---

De minimale hardware- en softwarevereisten van de pc zijn als volgt:

- **Processor:** 32-bit (x86) of 64-bit (x64) 2GHz of hoger (Windows 7, 8, 10 Home Premium, Professional of Ultimate of 11 Home, Pro);
- **RAM:** 2 GB (32-bits of 64-bits);
- **Schijfruimte:** 16 GB (32 bit) of 20 GB (64 bit) beschikbaar;
- **Geluidskaart:** compatibel met Microsoft Windows 7, 8, 10 32-bit of 64-bit (Home Premium, Professional of Ultimate) en 11 64-bit (Home of Pro);
- **Videokaart:** compatibel met Microsoft Windows 7, 8, 10 32-bit of 64-bit (Home Premium, Professional of Ultimate) en 11 64-bit (Home of Pro) resolutie van minimaal 1024 x 768 pixels;
- **Webcam** (\*): compatibel met Microsoft Windows 7, 8, 10 32-bit of 64-bit (Home Premium, Professional of Ultimate) en 11 64-bit (Home of Pro);
- **USB-poort:** 1 voor het aansluiten van de sleutel  
1 voor het aansluiten van deurstation 1060/41 (optioneel)
- **Ethernet-interface:** 10/100 Mbps.

## 3 INSTALLATIE

---

Sluit de pc waarop u de applicatie wilt gebruiken aan op een schakelaar in het Ipercom-systeem. Sluit vervolgens de USB-stick aan op een pc-poort.

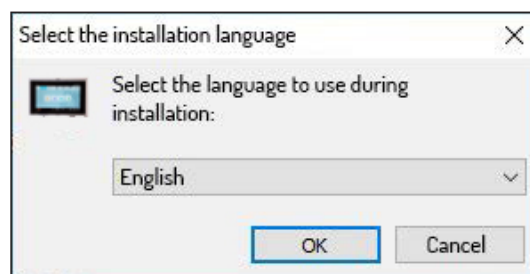
**OPGELET!** Alleen voor installatiedoeleinden moet het Ipercom-systeem verbonden zijn met internet om de koppeling tussen de sleutel en het Ipercom-systeem tot stand te brengen.

U mag de USB-stick tijdens de installatiefasen **NIET VERWIJDEREN** van de PC en volg de aanwijzingen die achtereenvolgens in de verschillende interfacevensters worden weergegeven.

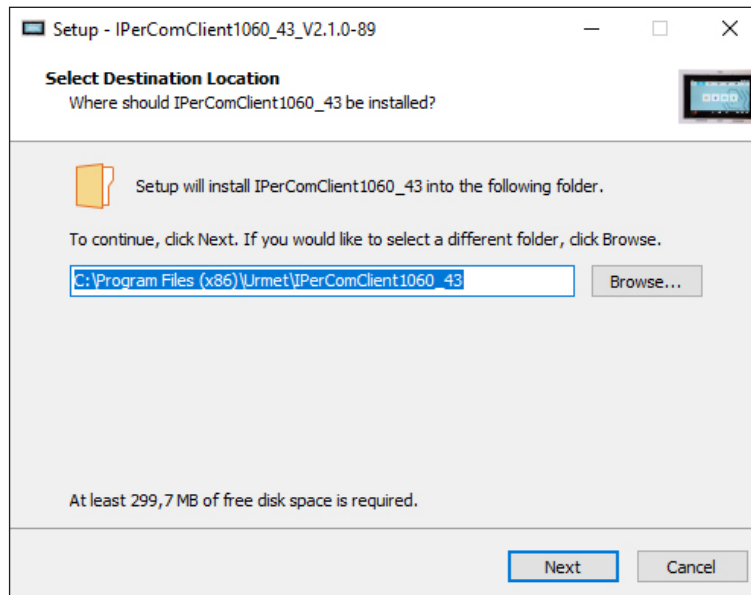
Om de installatieprocedure van de toepassing correct uit te voeren, moet u toegang hebben tot de pc met systeembeheerdersrechten. Anders is het niet mogelijk om de installatie correct uit te voeren.

De installatieprocedure van de toepassing begint met het uitvoeren van het relatieve installatiebestand "**IPerComClient1060\_43\_X.X.X-XX\_YY.YY\_Setup.exe**" in de USB-stick.

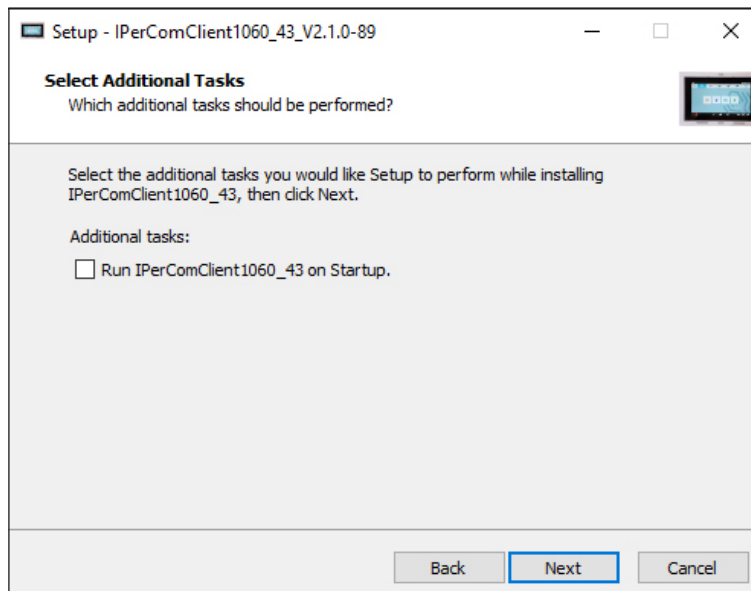
Na het starten van het installatiebestand verschijnt een venster waarin u de installatietaal van de toepassing moet selecteren.



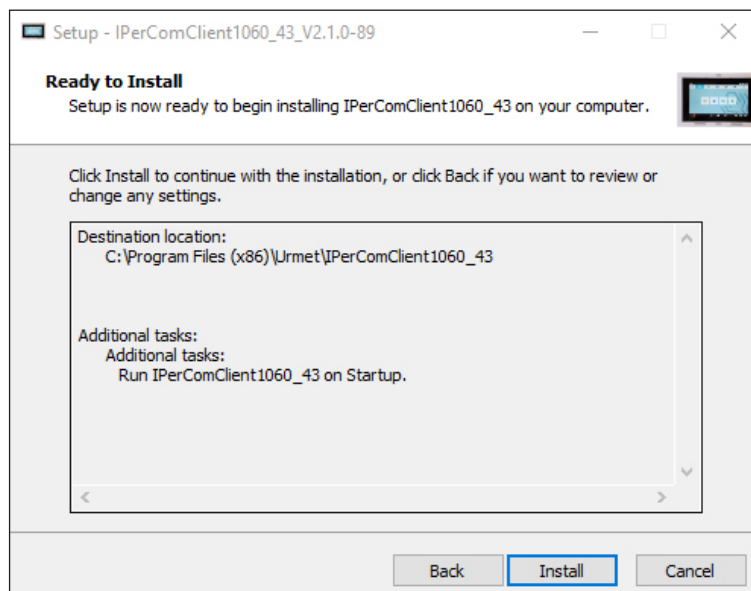
Nadat u de taal voor de installatie heeft geselecteerd, verschijnt er een nieuw venster met de map waarin de App zal worden geïnstalleerd (u kunt een andere map kiezen met de toets “**Browse (Bladeren)**”):



Door op de knop “**Volgende**” te drukken, verschijnt het volgende scherm, waar u het vakje “**Launch IpercomClient1060\_43 wanneer Windows start**” kunt aanvinken, zodat de toepassing automatisch wordt geactiveerd wanneer Windows wordt gestart.

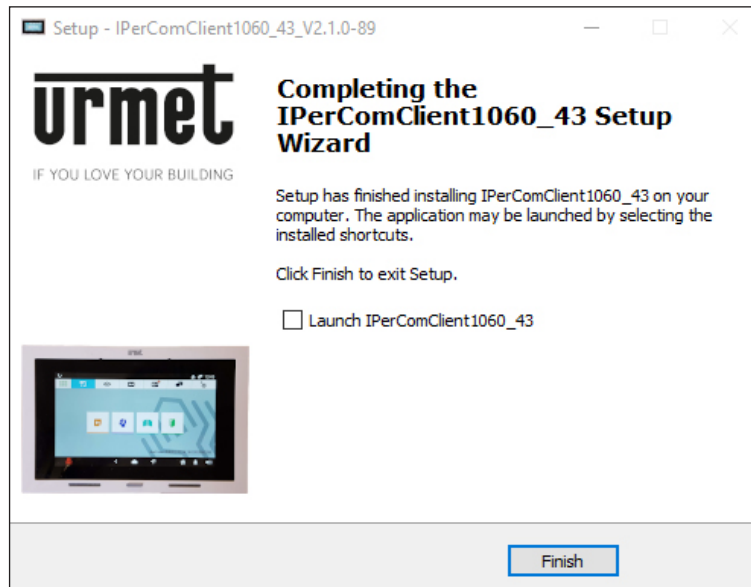



Als u op de toets “**Next (Doorgaan)**” drukt, verschijnt het volgende venster waarin u het installatieproces kunt starten met de toets “**Instal (Installeren)**”.





Na de installatie toont de App het volgende scherm:

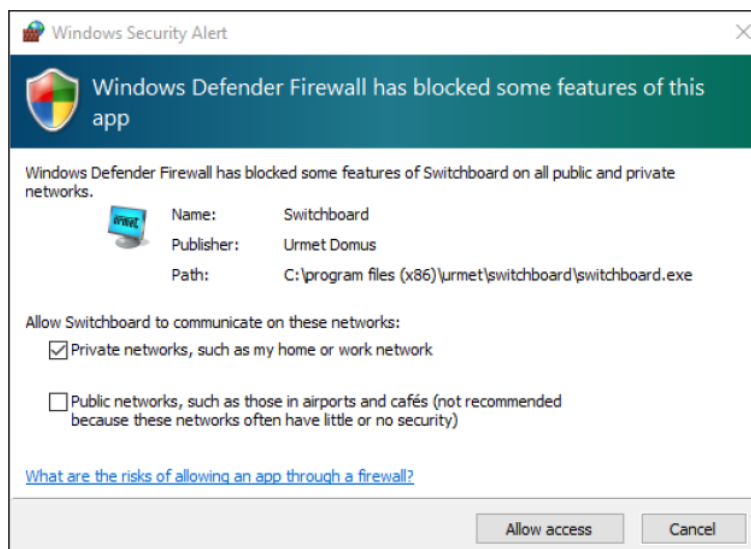


 Door het vakje **“Start IPerComClient 1060\_43”** aan te vinken, kan de applicatie gestart worden onmiddellijk na het sluiten van het installatiescherm.

Druk op de toets **“Finish (Einde)”** om de installatiefase af te sluiten.

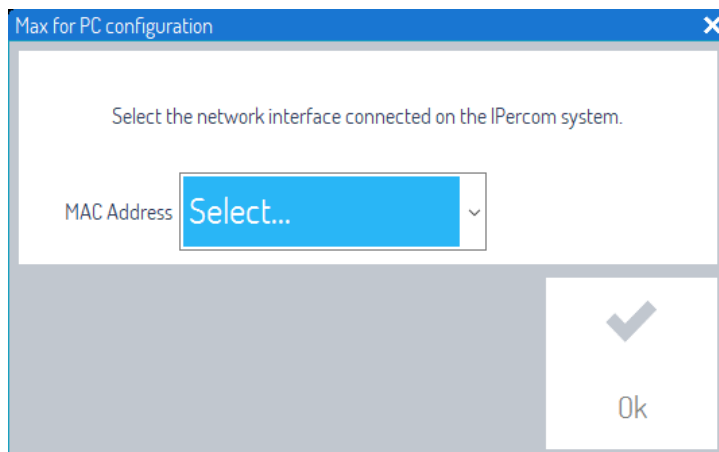
## 4. DE TOEPASSING STARTEN

Tijdens de eerste run kan het Windows-besturingssysteem aangeven dat het nodig is om toegang te verlenen tot de IP-netwerpoorten die worden gebruikt voor communicatie tussen het Ipercom-systeem en de “IPerComClient”-toepassing. Deze handeling is noodzakelijk voor het correct functioneren van de applicatie. Als de ontgrendeling van poorten op het IP-netwerk wordt beheerd door de Windows Firewall-module, wordt het volgende scherm weergegeven:




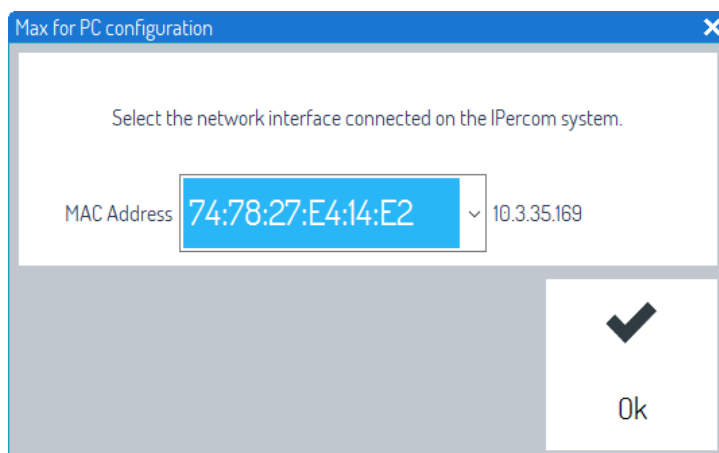
Vink de vakjes aan om toegang te krijgen tot de netwerken en druk op de knop “**Toegang toestaan**”.

Bij de eerste start moet het Mac-adres van de netwerkinterface geselecteerd worden dat aangesloten is op het Ipercom-systeem, om de koppeling tussen de applicatie en het systeem mogelijk te maken.

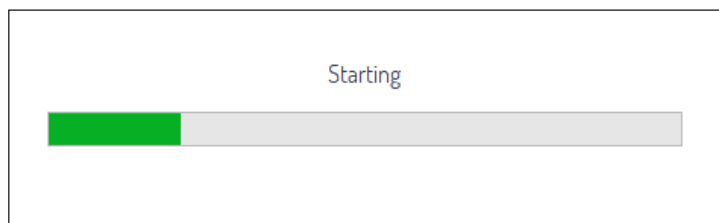


Selecteer in het veld “**MAC Address**” het juiste MAC-adres van het Ipercom-netwerk in het vervolgkeuzemenu.

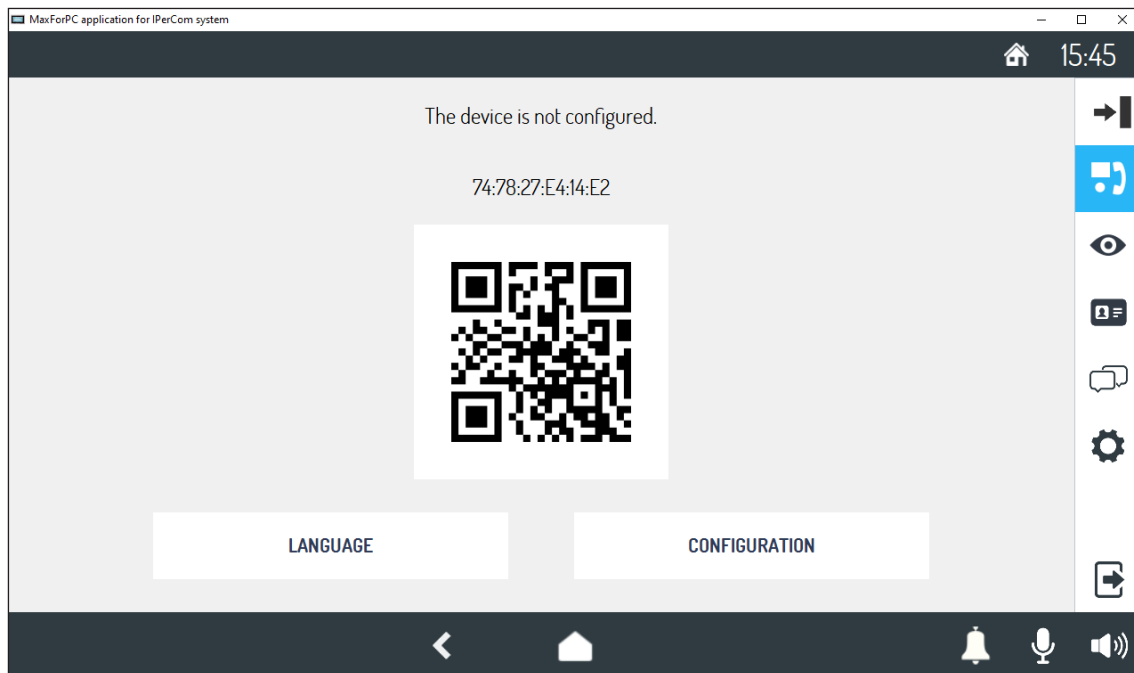
 *Het is mogelijk om het MAC-adres te traceren via de pc die is aangesloten op het Ipercom-netwerk. Open het pc-configuratiescherm en selecteer het item “**Netwerk en internet**”, selecteer het item “**Netwerkcentrum**” en selecteer tenslotte het item “**Adapterinstellingen wijzigen**”. Identificeer het netwerk van het Ipercom-systeem, druk op de rechtermuisknop en selecteer het item “**Status**” en druk vervolgens op de knop “**Details ...**”. Er wordt een scherm geopend met de eigenschappen van de netwerkverbinding. Het veld “**Fysiek adres**” toont het MAC-adres van de netwerkinterface die is aangesloten op het Ipercom-netwerk.*



Nadat u het juiste MAC-adres hebt geselecteerd, drukt u op de knop “**OK**”.



Aan het einde van het koppelingsproces wordt het volgende scherm weergegeven:



De applicatie IPerComClient Sch.1060/43 is correct gekoppeld aan het Ipercom-systeem en wacht op ontvangst van de configuratie.

**Om de applicatie te gebruiken is het altijd nodig:**

- de pc op het Ipercom-systeem aan te sluiten,
- De USB-stick op de PC aan te sluiten.

**OPGELET!** Wis het uitvoerende bestand “IPerComClient1060\_43\_X.X.X-XX\_YY.YY\_Setup.exe” op de USB-stick niet.

## 5. CONFIGURATIE

Voor de configuratie van de applicatie Sch. 1060/43 raadpleeg de technische handleiding van het Ipercom-systeem door deze te downloaden van de Urmet-website in het gedeelte *Download/Technische handleidingen/Communicatie/Ipercom-systeem* door op de onderstaande link te klikken.

<http://qrcode.urmet.com/default.aspx?arg=manuali&sezione=Ipercom&lingua=en>

**OPGELET!** In het geval van configuratie met de applicatie Ipercom Installer Tools, wordt aanbevolen om een andere PC te gebruiken dan die waarop de software Sch.1060/43 geïnstalleerd is.

**DS 1060-174**

URMET S.p.A.  
10154 TORINO (ITALY)  
VIA BOLOGNA 188/C  
Telef. +39 011.24.00.000 (RIC. AUT.)  
Fax +39 011.24.00.300 - 323

**urmet**

**LBT 21017**

Area tecnica  
servizio clienti +39 011.23.39.810  
<http://www.urmet.com>  
e-mail: [info@urmet.com](mailto:info@urmet.com)